



### ENGINE TIER 4 INTERIM

Make and model	MITSUBISHI D04EG-TAA
Engine Power (ISO 14396)	74 kW (99 hp)
Maximum torque	372 Nm (1600 rpm)
Type	Water-cooled, direct injection type diesel engine with intercooler turbo-charger electric common-rail
Displacement	3.3 l
N. of cylinders	4
Bore x stroke	94 x 120 mm

**iNDr** Integrated Noise&Dust Reduction Cooling System

#### Electronic engine rpm control, dial type

**Auto-Idling selector** returns engine to minimum rpm when all controls are in neutral position

The engine complies with 97/68/EC standards stage IIIB (Tier4 interim)



### ELECTRICAL SYSTEM

Voltage / Alternator	24V / 50 A
Starter motor	2.4 kW
Maintenance-free batteries	2 x 12V / 160 Ah



### TRANSMISSION

Type	hydrostatic, two-speed, Automatic DownShift
Travel motors	axial piston type, double displacement
Brakes	automatic discs type
Final drive	oil bath, planetary reduction
Gradeability	70% (35°)
Travel speeds	low 0 - 3.2 km/h / high 0 - 6.5 km/h
Drawbar pull	145 kN



### UNDERCARRIAGE

X-frame undercarriage design	
Reinforced track chain with sealed bushing	
Track rollers (each side)	6
Carrier rollers (each side)	2
Length of track on ground (mm)	2800
Gauge (mm)	1990
Shoes (mm)	500-600
Shoe type	Tractor type triple grouser shoe
No. for each side	40
Height of grouser shoe	30 mm



### HYDRAULIC SYSTEM

High capacity double pumps with electronic delivery adjustment. Variable displacement pistons pumps revert in neutral automatically to zero. Main Control Valve with Fail Safe Function and Anti drift valve. H.A.O.A. (Hydrotronic Active Operation Aid) E.S.S.C. (Engine Speed Sensing Control) D.O.C. (Dipperstick Optimized Control) Power Boost device New generation A.E.P. (Advanced Electronic Processor)

#### 3 working Modes

H Mode - Heavy duty excavation work  
S Mode - Standard digging and loading work  
E Mode - Fuel Economy

#### Attachments Modes

Breaker (One-way hydraulic flow)  
Nibbler (Two-way hydraulic flow)  
Attachments flow and pressure setting from cab, 20 presets storage  
**Hydraulic pump**

Max flow at rated engine speed	2 x 130 l/min
Piloting circuit gear type pump	max 20 l/min
Additional Blade circuit	1 x 55 l/min

#### Directional control valves

Type ..... 8-spool valve

#### System Pressures

Boom, Arm&Bucket	34.3 MPa
with Power Boost	37.8 MPa
Travel	34.3 MPa
Swing	28 MPa
Pilot control Circuit	5 MPa
Dozer Blade	27.4 MPa



### CAPACITIES

Engine oil	11.5 l
Fuel tank	200 l
Hydraulic system (incl. 85.2 l tank)	126.7 l
Cooling system	13 l



### SWING

Swing motor	axial piston type
Swing brake	hydraulic brake
Swing speed	0-11 rpm



### PAT DOZER BLADE

Tot. width (wings extended/folded) x height	3260/2475 x 815 mm
Maximum angle (left/right)	25°
Digging depth	600 mm
Lift height	790 mm
Dozer max tilt height	445 mm



### CAB AND CONTROLS

#### Operator's cab

Structure	Fully enclosed steel structure
EVO operator cab	evolution in comfort and safety compliant to ROPS (ISO 12117-2) and FOPS (ISO 10262 level II) standards
Rear camera	standard
Monitor	integrated multi-function control monitor with integrated rear view camera display

#### Operator's seat

Operator's seat ..... Adjustable and reclining device

#### Operation

Travel	Two hand levers or two foot pedals for forward and backward operations of each track independently
Excavating and swing	Two hand levers for four operations

#### Sound Level

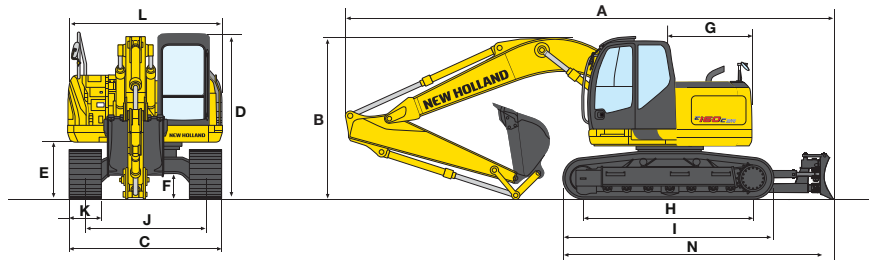
External guaranteed sound level (EU Directive 2000/14/EC)	LwA 95 dB(A)
Operator cab sound pressure level (ISO 6396)	LpA 65 dB(A)



**BUILT AROUND YOU**

# E160C BLADE RUN

## DIMENSIONS - MONOBOOM



ARM		A	B	D	E	F	G	H	I	J	L	N
2380	mm	8530	3030	3030	1010	4730	1490	2800	3600	1990	2490	4770

## OPERATING WEIGHT

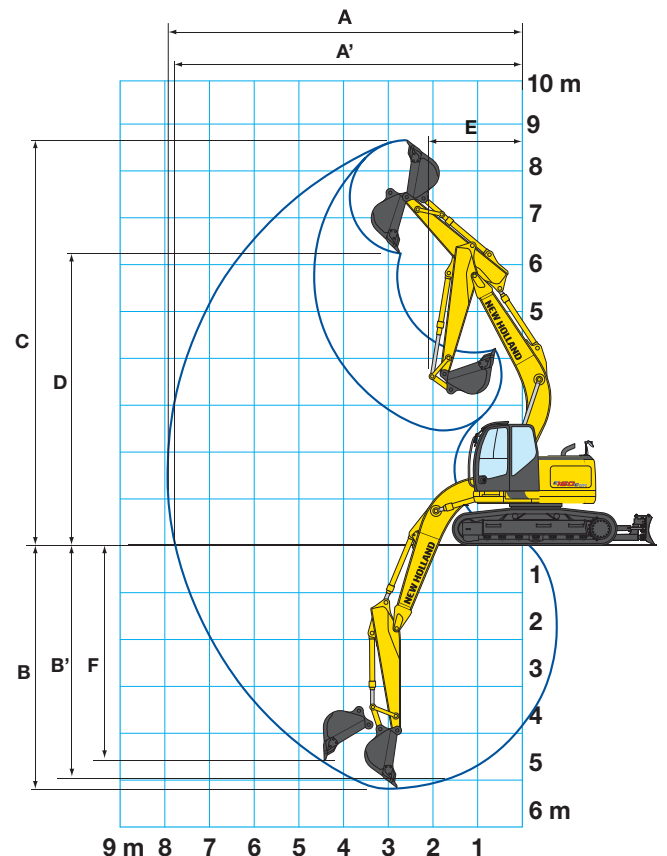
		E160C BR	
K - Curved shoe width	mm	500	600
C - Maximum track width	mm	2490	2590
Operating weight	kg	16000	16200
Ground pressure	bar	0.51	0.43
Max Blade width	mm	3260	3260
Blade width (wings folded)	mm	2480	2480
Blade height	mm	815	815
X - Max lift	mm	790	790
Y - Max digging	mm	600	600

## DIGGING PERFORMANCE

DIPPERSTICK		2380
A	mm	8340
A'	mm	8160
B	mm	5360
B'	mm	5130
C	mm	9340
D	mm	6900
E	mm	2000
F	mm	4730

## BREAKOUT FORCE

DIPPERSTICK		2380
Bucket	kN	90.1
Dipperstick	kN	64.1



## LIFTING CAPACITY

HEIGHT	RADIUS OF LOAD										
	1.5 m		3.0 m		4.5 m		6.0 m		AT MAX REACH		REACH m
	FRONT	SIDE	FRONT	SIDE	FRONT	SIDE	FRONT	SIDE	FRONT	SIDE	
+ 7.5 m									1520*	1520*	4.17
+ 6.0 m					2980*	2980*			1260*	1260*	5.77
+ 4.5 m					3320*	3290	2270	1960	1210*	1210*	6.65
+ 3.0 m			6030*	5920	3610	3040	2170	1870	1250*	1250*	7.11
+ 1.5 m			6660	5120	3310	2760	2040	1750	1380*	1260	7.23
0			6310	4830	3100	2580	1950	1660	1500	1290	7.02
-1.5 m	5570*	5570*	6300	4820	3030	2520	1910	1630	1710	1470	6.45
-3.0 m	8490*	8490*	6350*	4950	3090	2570			2320	1970	5.40

All the lift capacity values are in tonnes and without bucket

As per ISO 10567 the indicated load is no more than 87% of hydraulic system lifting capacity or 75% of static tipping load. Values marked with an asterisk are limited by the hydraulic system.

## STANDARD EQUIPMENT

- Tier 4 interim Engine 4 cylinders
- H.A. O.A. (Hydrotronic active operation aid)
- C.P.B. (Continuous Power Boost)
- I.N.D.R (Integrated Noise & Dust Reduction Cooling System)
- S.H.S (Smart Hydraulic System)
- 6 Way Dozer Blade
- Reinforced LC Undercarriage
- Lower Frame Guard
- Auto-Idling device
- 2 track guide for each side
- Two travel speed with Automatic Down Shift device
- Automatic fuel electrical pump
- Tool box
- Tool kit
- Foot pedal or lever travel control
- Grease bath swing ring
- Standard -25° C engine cold start aid
- Rear mirror
- Two spot lights on lifting boom
- Cab with structures compliant per ISO 12177-2 (ROPS) and ISO10262 (FOPS)
- Transparent cab roof and opening front window
- Mechanical seat suspension
- Adjustable armrests
- Speakers Set
- New generation A.E.P. (Advanced Electronic Processor)
- Multi-function control monitor with integrated rearview camera, mode and attachments selection, gauges for coolant temperature, fuel tank and fuel economy. Menu functions for fuel consumption graphing, maintenance schedules, system status. Auto-Idling mode selector.
- Automatic air conditioner
- Pressure drain switch
- Horn
- Rear view camera

## OPTIONS

- Centralized boom lubrication
- Antitheft device
- Rotating beacon
- Cab additional lights and rain protection
- Cab front guard
- Hydraulic quick coupler provision
- Customer color
- Heated air suspension seat
- Hammer and crusher circuit with foot control
- Hammer and crusher circuit HPC
- (Hydraulic Proportional Control)
- Hammer, crusher and extra circuit (Hydraulic Proportional Control)
- Shoes: BR version 500 - 600 mm
- Biological Hydraulic Oil

Note: standard and optional equipment may vary by country. Consult your NEW HOLLAND dealer for specific details.

# PARTS AND SERVICE

The New Holland dealer network is, in itself, the best guarantee of continued productivity for the machines it delivers to its customers. New Holland service technicians are fully equipped to resolve all maintenance and repair issues, with each and every service point providing the high standards they are obliged to observe under New Holland's stringent quality guidelines. The New Holland global parts network ensures fast, reliable, replacement parts for less downtime, increased productivity and, of course, profitable operation for its customers.



## EUROPEAN PLANT SERVICES

[www.europeanplantservices.com](http://www.europeanplantservices.com)

European Plant Services  
8 Carr Crofts Drive  
Armley  
Leeds  
West Yorkshire  
United Kingdom  
LS12 3AL

Tel: +44 (0)113 2046919

Published by NEW HOLLAND KOBELCO CONSTRUCTION MACHINERY S.p.A  
Printed in Italy - MediaCross Firenze Cod 30686GB - Printed 01/13

Printed on recycled paper  
CoC-FSC 000010 CQ Mixed sources



ELEMENTAL  
CHLORINE  
FREE  
GUARANTEED



[www.newholland.com](http://www.newholland.com)

